



DS-200 SERIES

COMPACT AUTO-TRACKING
TOTAL STATION





Compact Auto-Tracking Total Station

- Auto-tracking technology
- Hybrid Positioning™ ready
- Ultra-powerful advanced EDM
- Exclusive Longlink™ communications
- RC-5 quick lock
- Rugged waterproof design

A professional motorized total station, the DS Series is a mid-ranged positioning product for the construction professional who is looking for productivity enhancement from servo motors and XPointing™ Technology. The MAGNET® on-board software has an intuitive interface to assist with staking out complex structures. This rugged waterproof designed total station has the latest technology of TSshield™ advanced security and maintenance, and exclusive LongLink™ communications.

Work directly on the bright, color touchscreen or with the alpha-numeric keyboard, to achieve higher levels of production with MAGNET® Field on-board software. The DS Series total station can be used on a wide variety of applications, from building layout to earthwork volumes, and land surveying.

A world's first – TSshield™

Topcon is proud to offer another world's first technology in all DS Series total stations – TSshield. Every instrument is equipped with a telematics-based multi-function communications module providing the ultimate security and maintenance capabilities for your investment.

If the activated instrument is lost or stolen, send a coded signal to the instrument and disable it. This feature secures the total station anywhere in the world.

In the same module you have daily connectivity to cloud-based Topcon servers that can inform you of available software updates and firmware enhancements.



LongLink™

When connected with an external data collector the LongLink communication provides the power at the remote rod position. The remote operator can record the data for codes and rod heights for as-builts eliminating most common errors. For stakeout, the remote operator can view directions required to find the stake point. The system becomes an economical robotic system where the instrument man simply needs to follow and aim on the remote prism.



Fast and powerful EDM
1,000 m non-prism range



World's first
TSshield™ system

Easy access USB Type
A/B flash drive port

Advanced angle
accuracy

Rugged waterproof/
dustproof IP65 design

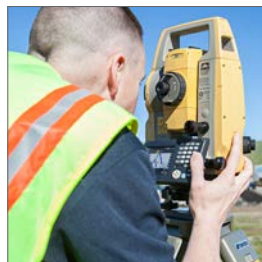
Exclusive "STAR-KEY"
functionality

Backlit 25 key keyboard and
directional arrow key



Telescope	
Resolving power	2.5"
Magnification	30x
Angle Measurement	
Min. Resolution/Accuracy	
DS-201	1"
DS-203	3"
DS-205	5"
Tilt Angle Compensation	
Compensation	Dual-axis compensator
Range	±6'
Distance Measurement	
Prism EDM Range	6,000 m
Prism EDM Accuracy	1.5 mm + 2 ppm
Non-Prism Range	1,000 m
Non-Prism Accuracy	2 mm + 2 ppm (0.3 - 200 m)
Measuring Time	Fine: 0.9 sec Rapid: 0.6 sec Tracking: 0.4 sec
Optional Auto-Tracking Range	
360° Prism	2 to 600 m
Single Prism	1.3 to 1,000 m
Communications	
LongLink™ rover communications*	
USB 2.0 Slot (Host + Slave)	
RS-232C Serial	
General	
Display	Color Touch TFT 240 x 320 Display (Dual Display)
Keyboard	25 keys with illuminator (Single Keyboard)
Battery Operation	Up to 5 hours
Dust/Water Rating	IP65
Wireless	Bluetooth® Class 1
Operating Temp	-20°C to 50°C

* The communication range may vary due to the condition of the area



Ultra-powerful advanced EDM

The 1,000 m reflectorless measurement can be achieved with a smaller beam spot size. Measurements can be as fast as 0.9 seconds.

Hybrid Positioning™ technology

Use both GNSS positioning and optical positioning data at the same time, in ways that improve field measurement efficiency. Hybrid Search provides a quick lock for the prism.

Advanced angle accuracy

Topcon's advanced angle encoder technology with exclusive calibration system provides "Best in Class" angle accuracy, up to 1-second (DS 201).

EDM trigger key

The EDM trigger key is located in a perfect touch location. Simply press the key to measure a distance. The location of the key promotes angle stability. The key is waterproof and dustproof and can be used easily in cold weather with gloves.



For more information:
topconpositioning.com/ds-series

Specifications subject to change without notice.
©2016 Topcon Corporation All rights reserved.
7010-2139 D 5/16

The Bluetooth® word mark and logos are registered trademarks owned by Bluetooth SIG, Inc. and any use of such marks by Topcon is under license. Other trademarks and trade names are those of their respective owners.